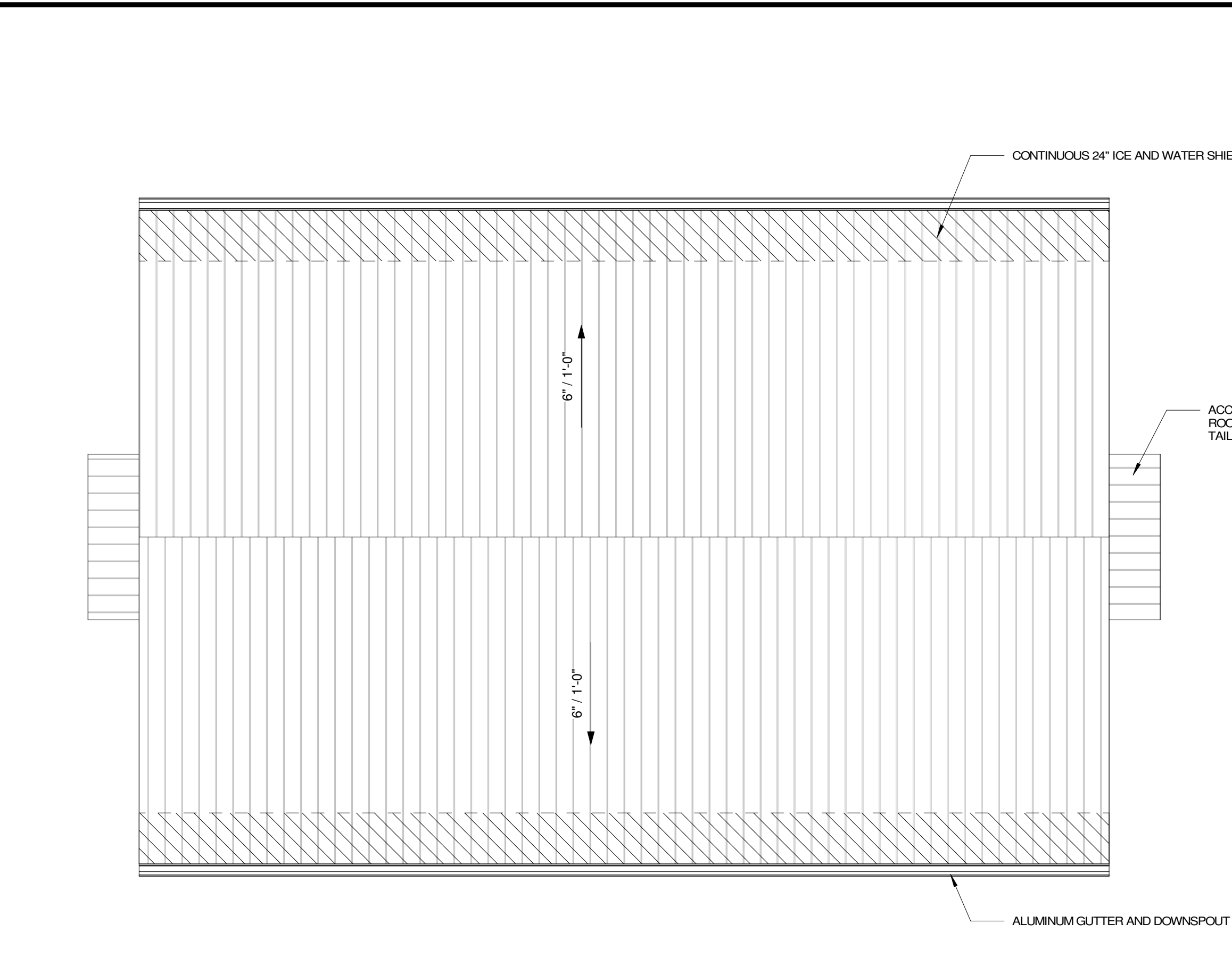
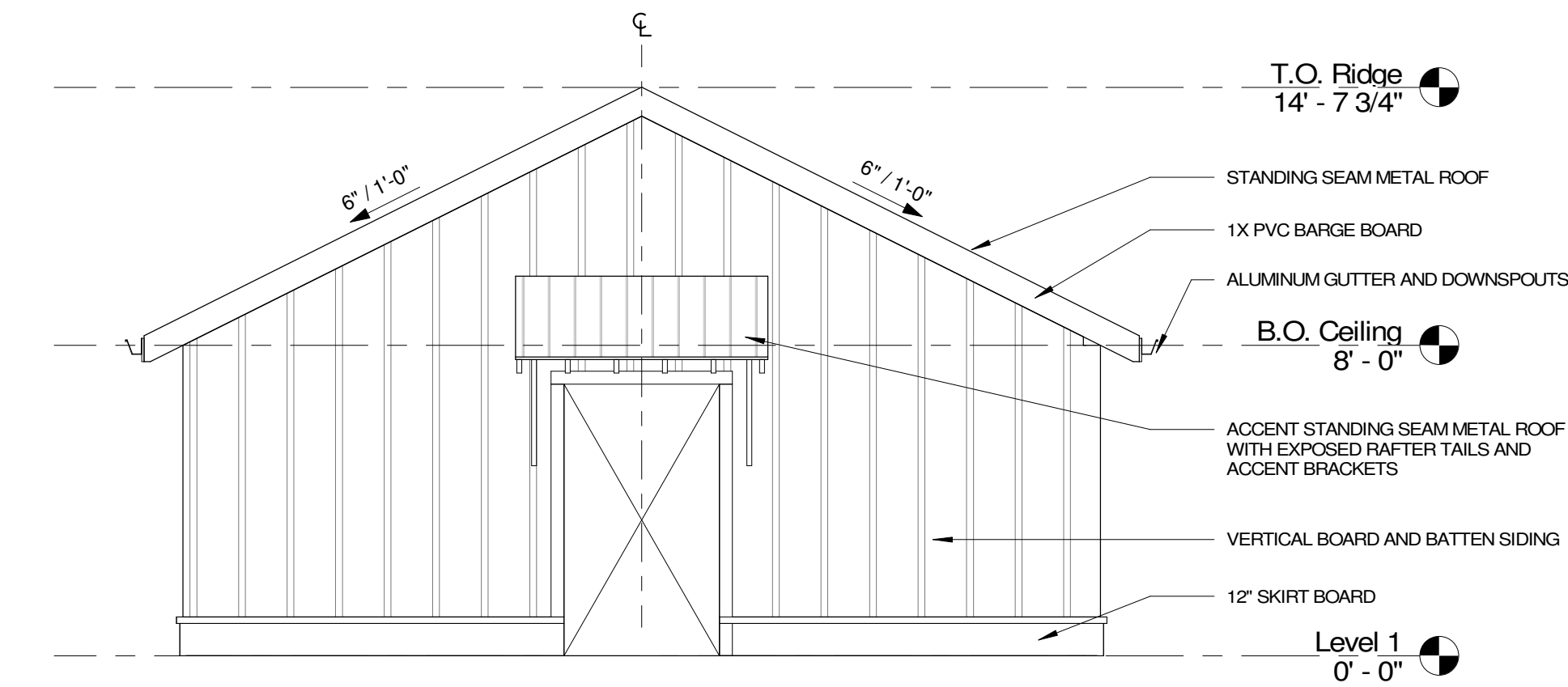


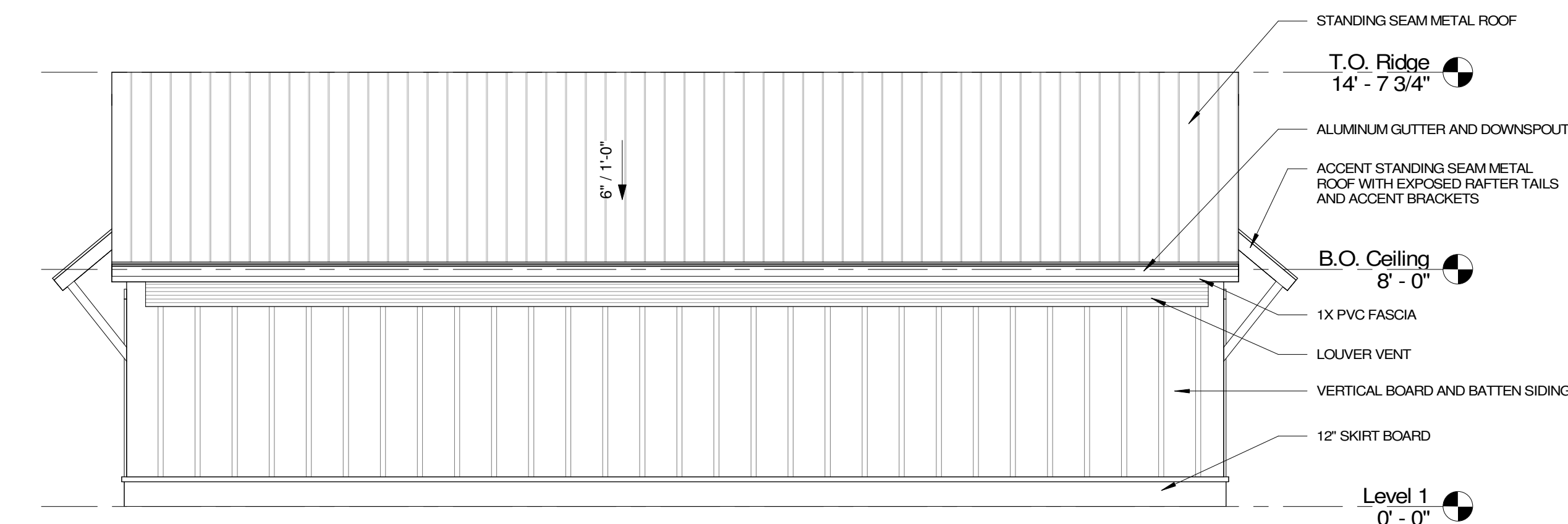
1 STORAGE SHED FLOOR PLAN  
1/4" = 1'-0"



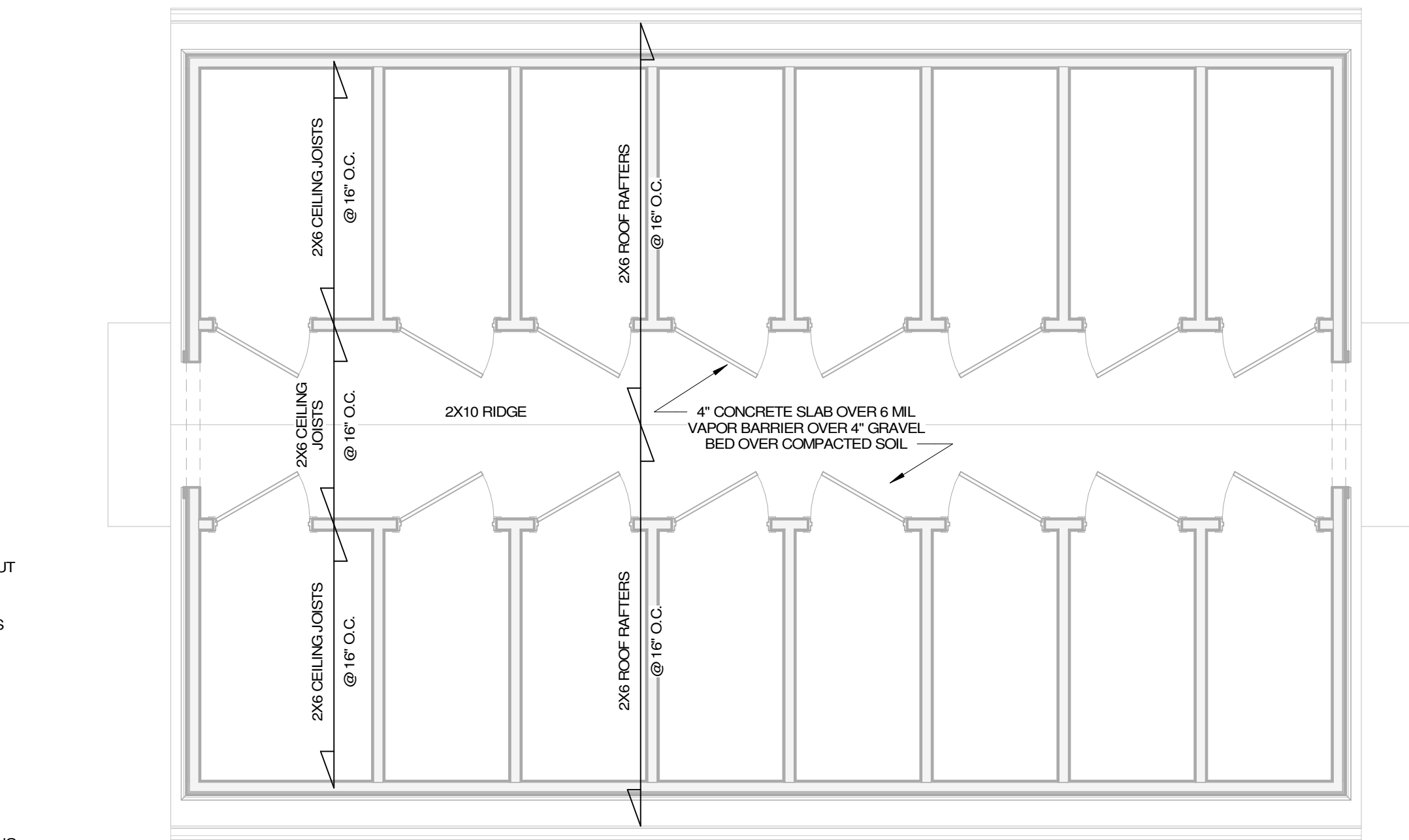
2 STORAGE SHED ROOF PLAN  
1/4" = 1'-0"



4 STORAGE ENTRY ELEVATION  
1/4" = 1'-0"



5 STORAGE SIDE ELEVATION  
1/4" = 1'-0"

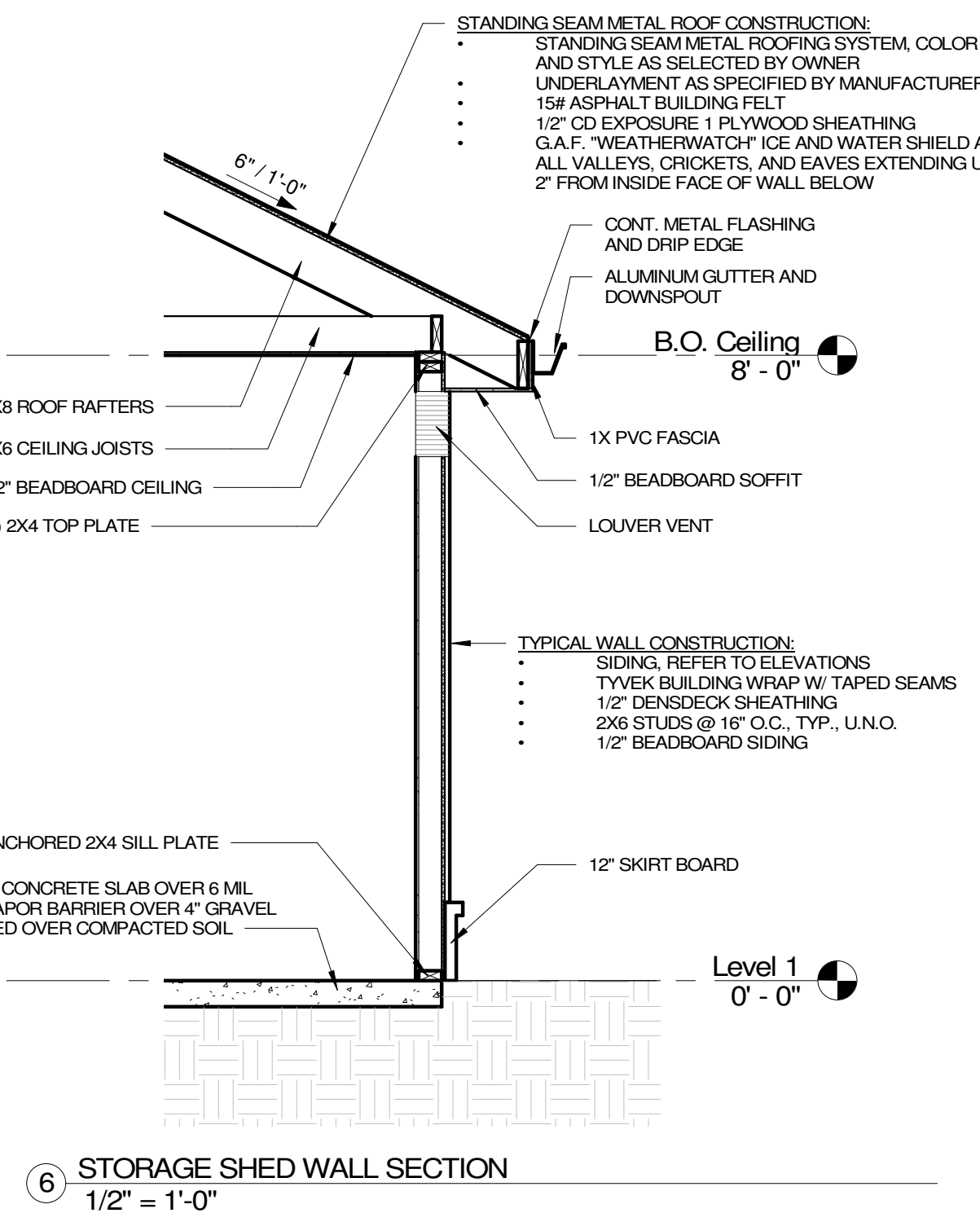


3 STORAGE SHED FRAMING PLAN  
1/4" = 1'-0"

DOOR SCHEDULE (STORAGE)			
Mark	Type	Door	
		Width	Height
S100	E	4' - 0"	7' - 0"
S101	E	4' - 0"	7' - 0"
S102	A	3' - 0"	6' - 8"
S103	A	3' - 0"	6' - 8"
S104	A	3' - 0"	6' - 8"
S105	A	3' - 0"	6' - 8"
S106	A	3' - 0"	6' - 8"
S107	A	3' - 0"	6' - 8"
S108	A	3' - 0"	6' - 8"
S109	A	3' - 0"	6' - 8"
S110	A	3' - 0"	6' - 8"
S111	A	3' - 0"	6' - 8"
S112	A	3' - 0"	6' - 8"
S113	A	3' - 0"	6' - 8"
S114	A	3' - 0"	6' - 8"
S115	A	3' - 0"	6' - 8"
S116	A	3' - 0"	6' - 8"
S117	A	3' - 0"	6' - 8"

DOOR TYPE A

STORAGE SHED DOOR TYPE  
1/2" = 1'-0"



6 STORAGE SHED WALL SECTION  
1/2" = 1'-0"

mode

Monmouth Ocean Design Experts

DANIEL M. CONDATORE, RA

619 LAKE AVE/ 3RD FLOOR

ASBURY PARK, NJ 07712

NJ LICENSE #21A10798000

t: 732 800 1958

e: dcondatore@mode-arch.com

ENGINEER

ARCHITECT & ENGINEER

SIGNATURE & SEAL BOX

STATE OF NEW JERSEY

17980

REGISTERED ARCHITECT

SIGNATURE

SEAL DATE

OWNER

PROJECT LOCATION

NO. REVISIONS / ISSUES DATE

CHECKED BY: DMC DRAWN BY: DMC

SCALE:

DRAWINGS TITLE:

DRAWINGS TAG:

~ THE HAVEN AT PRINCETON ~

RESIDENTIAL DEVELOPMENT - AFFORDABLE HOUSING

Township of Montgomery

Somerset County, New Jersey 08540

Block: 37003 - Lot 7

STORAGE SHED FLOOR PLANS & DETAILS

A900