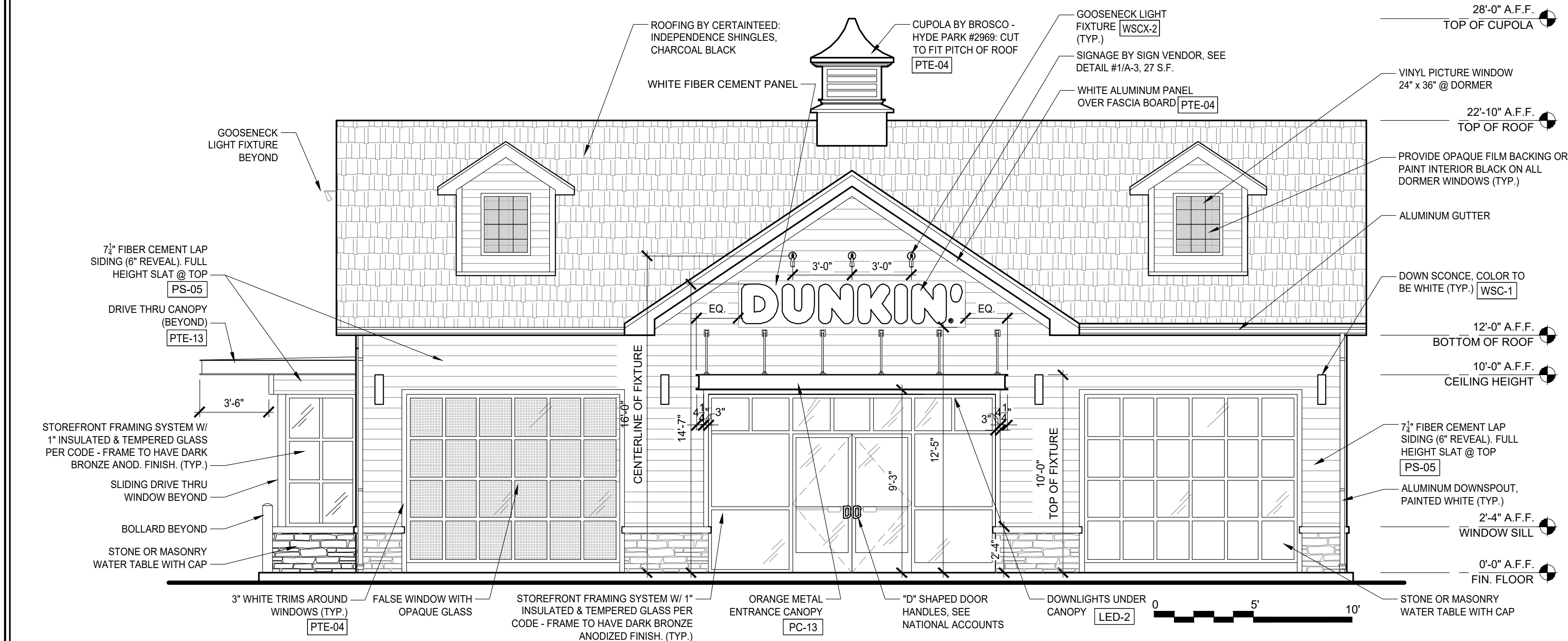


1 PROPOSED FLOOR PLAN

1/4" = 1'-0" NOTE:



2 SOUTHEAST ELEVATION (ROUTE U.S. 206)

1/4" = 1'-0" NOTE:

EXTERIOR FINISH SCHEDULE

EXTERIOR PAINT	EXTERIOR WALL PAINT					
	CODE	MATERIAL	MANUFACTURER	PRODUCT #	DESCRIPTION / REMARKS	VENDOR CONTACTS
	PTE-01	PAINT	SHERWIN WILLIAMS	OFF WHITE FINISH	SW 7063 'NEBULOUS WHITE'	PLACE ORDER WITH LOCAL SHERWIN WILLIAMS STORE FOR A STORE NEAR YOU CALL 800-474-3794
EXTERIOR FIBER CEMENT SIDING AND PANELS	CODE	MATERIAL	MANUFACTURER	PRODUCT #	DESCRIPTION / REMARKS	VENDOR CONTACTS
	PTE-02	PAINT		DD PINK	COLOR MATCH PMS 219 C COLOR: 'PRIMED FINISH' FIELD DIMENSION: 8'14" x 12' x 5/8" THK. WITH 6" SIDING EXPOSURE	MARK T. WEINER NATIONAL ACCOUNT EXECUTIVE 83 CHURCH ST BARRINGTON, RI 02806 M: 617-438-1408 F: 401-245-5176 EMAIL: MARK.T.WEINER@SHERWIN.COM
	PTE-03	PAINT		DD ORANGE	COLOR MATCH PMS 165C COLOR: 'PRIMED FINISH' FIELD DIMENSION: 8'14" x 12' x 5/8" THK. WITH 6" SIDING EXPOSURE	
EXTERIOR METAL PAINTED COATINGS	CODE	MATERIAL	MANUFACTURER	PRODUCT #	DESCRIPTION / REMARKS	VENDOR CONTACTS
	PC-04	PAINTED COATING	MATTHEWS PAINT	CHARCOAL FINISH	COLOR: 'IRON ORE' FINISH DIMENSION: 8'14" x 12' x 5/8" THK. WITH 6" SIDING EXPOSURE	JEFF HARVEY 774-207-6278 JEFFERY.HARVEY@JAMESHARDIE.COM
	PC-05	PAINTED COATING	SHERWIN WILLIAMS	CHARCOAL FINISH	SW 7069 'IRON ORE'	MARK T. WEINER NATIONAL ACCOUNT EXECUTIVE 83 CHURCH ST BARRINGTON, RI 02806
EXTERIOR METAL TRIM	CODE	MATERIAL	MANUFACTURER	PRODUCT #	DESCRIPTION / REMARKS	VENDOR CONTACTS
	TR-10	METAL	JAMES HARDIE	JH SURROUND OUTSIDE CORNER TRIM	FINISH: FACTORY CLEAR ANODIZED 16 GA TRIM AVAILABLE IN 8'-0" LENGTHS, USED WITH JAMES HARDIE REVEAL PANELS	JEFF HARVEY 774-207-6278 JEFFERY.HARVEY@JAMESHARDIE.COM

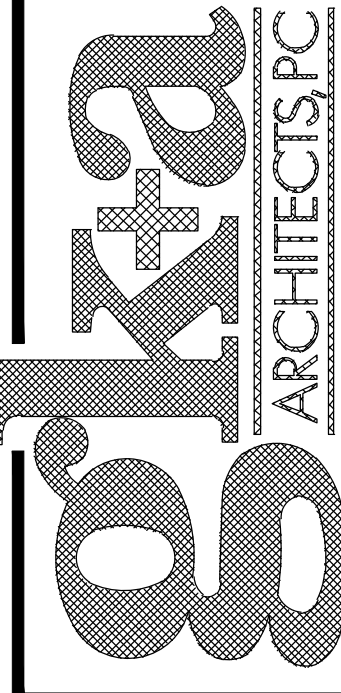
SIGNAGE DATA:

DESCRIPTION	ALLOWED	PROPOSED	VARIANCE
ATTACHED BUILDING SIGN (FRONT) 'DUNKIN'' SIGN SOUTHEAST ELEVATION @ ROUTE US 206	<ul style="list-style-type: none">SHALL NOT EXCEED 1/2 SQUARE FOOT OF SIGN AREA PER LINEAR FOOT OF BUILDING FACADE FRONTING ON A STREET AND OCCUPIED BY THE INDIVIDUAL USE, BUT IN NO CASE SHALL THE SIZE OF THE SIGN EXCEED 50 S.F. IN AREA	(1) DUNKIN' SIGN SIGN AREA = 28.8 SF SIGN WIDTH = 11'-5 3/4" SIGN PROJECTION = 5"	NO
ATTACHED BUILDING SIGN 'DD' AND 'MONTGOMERY RUNS ON DUNKIN'' SIGN SOUTHWEST ELEVATION @ GEORGETOWN-FRANKLIN TURNPIKE	<ul style="list-style-type: none">FOR CORNER LOTS, ONE ADDITIONAL ATTACHED SIGN IS PERMITTED FOR A PRINCIPAL USE WITHIN THE BUILDING WHICH FACES THE ADDITIONAL STREET, PROVIDED THAT THE SIGN SHALL NOT EXCEED 1/2 SQUARE FOOT OF SIGN AREA PER ONE LINEAR FOOT OF BUILDING FACADE FRONTING ON SAID STREET, BUT IN NO CASE SHALL THE SIZE OF THE SIGN EXCEED 20 SQUARE FEET IN AREA	(1) DD SIGN SIGN AREA = 17.58 SF SIGN WIDTH = 5'-10 1/4" SIGN PROJECTION = 5" (1) MONTGOMERY RUNS ON DUNKIN' SIGN SIGN AREA = 12.5 SF SIGN WIDTH = 7'-6 1/4" SIGN PROJECTION = 1 1/2" 17.58 + 12.5 = 30.08 SF	NO (V*) (V**)
MONUMENT SIGN	<ul style="list-style-type: none">ANY FREESTANDING SIGN SHALL NOT EXCEED 75 SQUARE FEET IN AREA OR 5% OF THE FRONT FACADE OF THE PRINCIPAL BUILDING, WHICHEVER IS LESS, AND SHALL NOT EXCEED EIGHT FEET IN HEIGHT.	(1) DUNKIN' SIGN SIGN AREA = 29.58 SIGN HEIGHT = 7'-8"	NO NO
DIRECTIONAL SIGN	<ul style="list-style-type: none">DO NOT EXCEED 2 SQUARE FEET IN AREA	DIRECTIONAL SIGNS SIGN AREA = 2.75 SIGN HEIGHT = 4'-10"	(V**)

ALL SIGNAGE INFORMATION TAKEN FROM THE TOWN OF MONTGOMERY, NJ MUNICIPAL CODE CHAPTER 16 - LAND DEVELOPMENT 16-4.12 HC HIGHWAY COMMERCIAL

(*) VARIANCE FOR QUANTITY
(**) VARIANCE FOR SQUARE FOOTAGE

36 Ames Avenue
Rutherford, NJ 07070
Tel. 201.896.0333
Fax. 201.896.9469
email@gkanda.biz

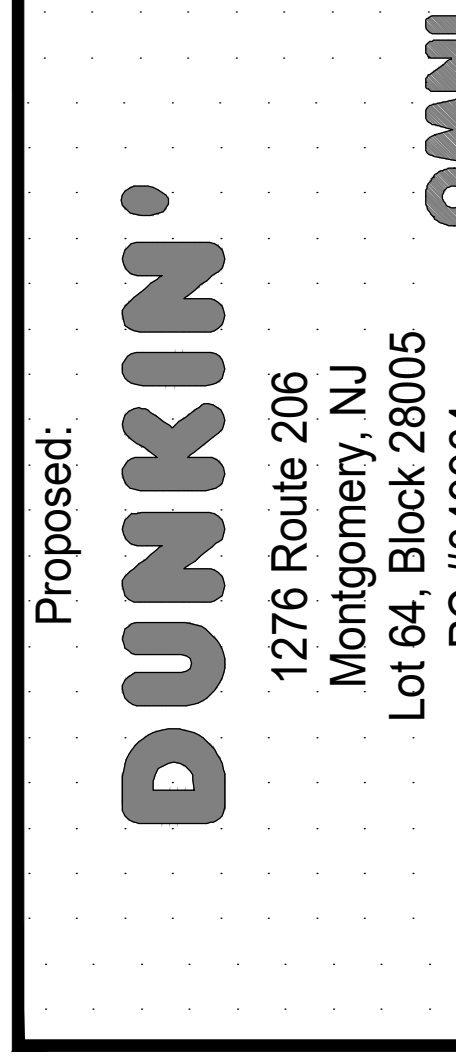


Gary Kliesch and Associate Architects

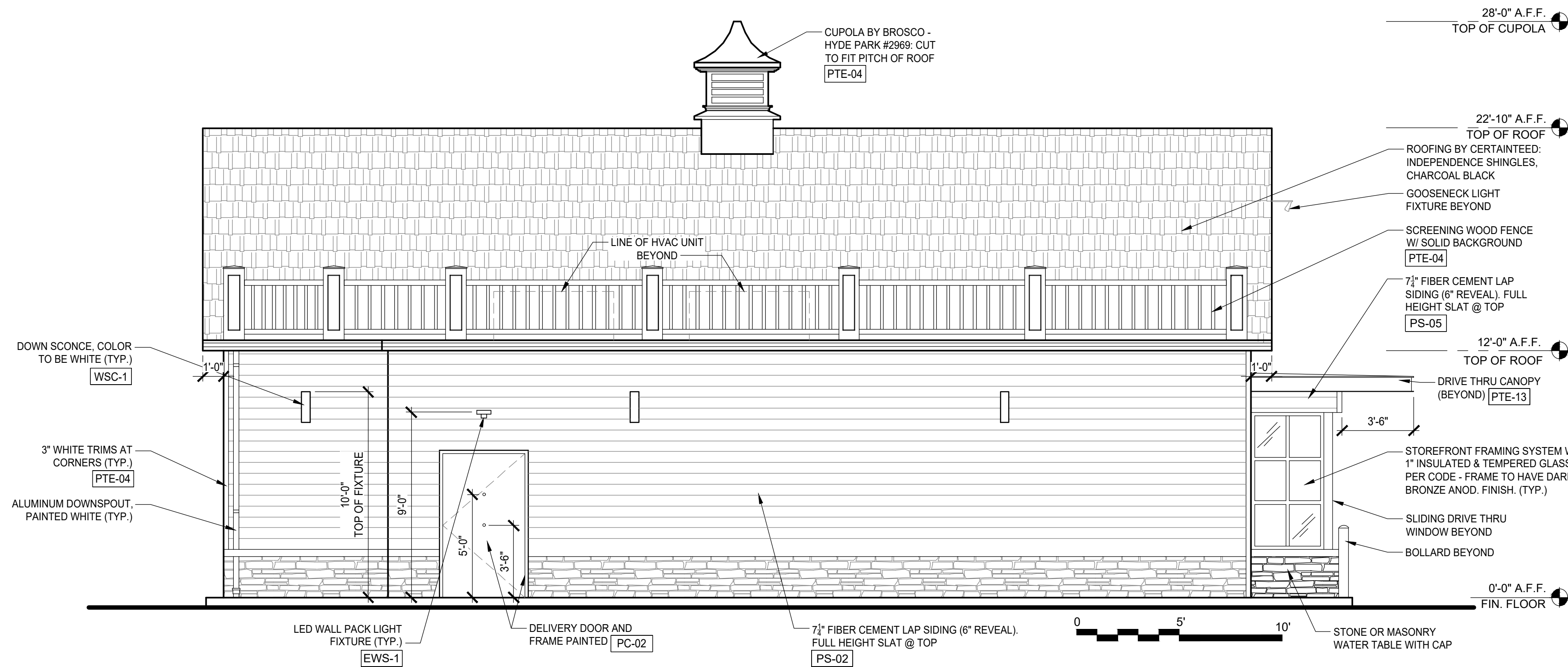
Rev. No.	Drawing Issues	Revisions	Date
1	Window Changes		02/11/21

NJ: AI 13332	NJCID: 21D00025000
NY: 025618	CT: ARI 0009367
FL: AR95762	DE: SS-0007765
WI: 11180-5	MD: 14129
PA: RA-015112B	SC: 8935
D.C.: ARC101838	MA: 10610
GA: RA 019863	MI: 1301064135
VA: 401016373	IL: 001.023586
NC: 11736	WV: 4569 NH-04487

Gary Kliesch
AIA, NCARB, NCID

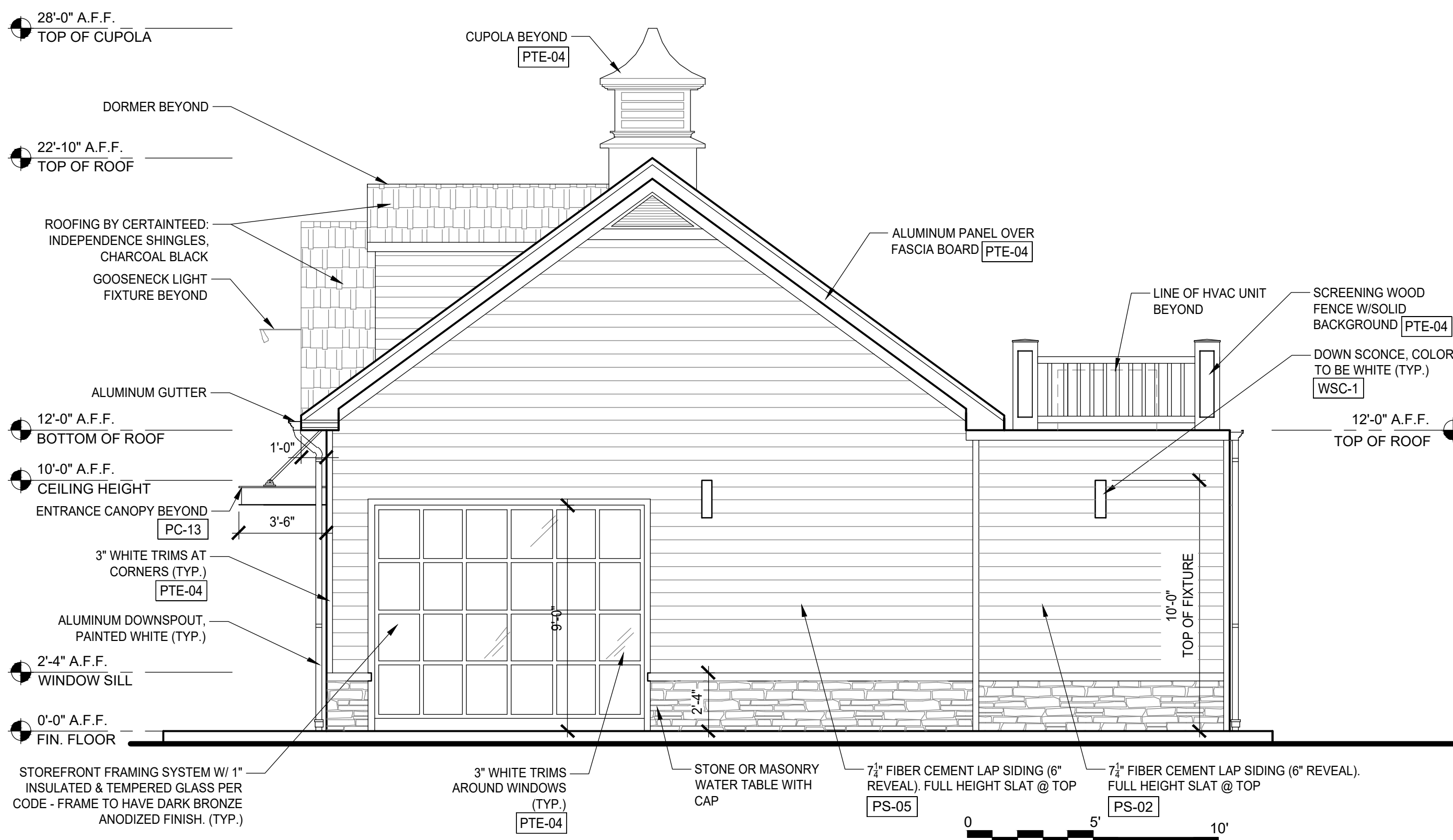


Drawing Title: PROPOSED FLOOR PLAN AND FRONT ELEVATION, SIGNAGE DATA, FINISH SCHEDULE	
Date: 05/07/21	Dwg No. A.1.0
Drawn By: J.M.	
Checked By: C.F.	
Job No: 11-051	1 of 3



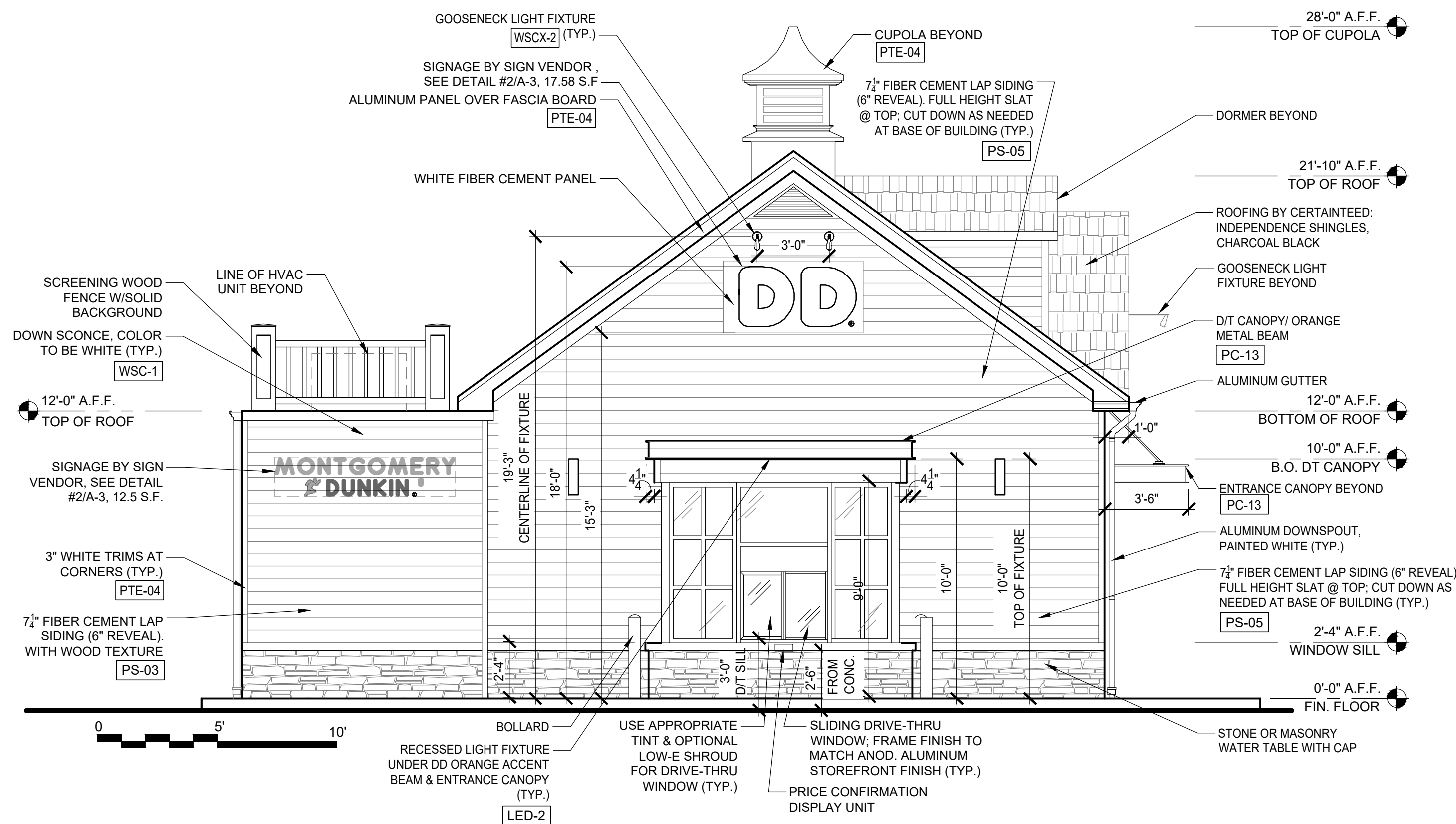
1 NORTHWEST ELEVATION (ROUTE U.S. 206)

1/4" = 1'-0" NOTE:



2 NORTHEAST ELEVATION

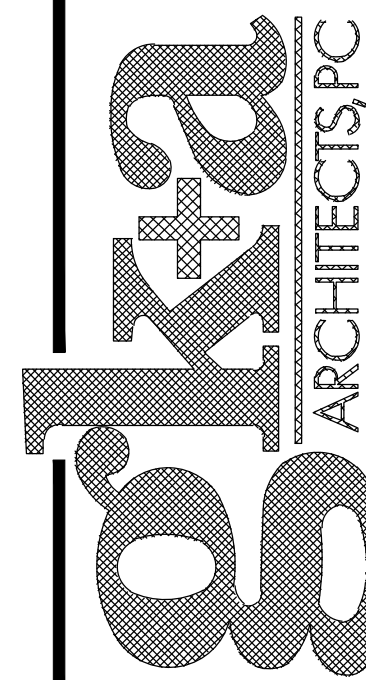
1/4" = 1'-0" NOTE:



3 SOUTHWEST ELEVATION (GEORGETOWN-FRANKLIN TURNPIKE)

1/4" = 1'-0" NOTE:

36 Arnes Avenue
Rutherford, NJ 07070
Tel. 201.896.0333
Fax. 201.896.9469
email@gkanda.biz



Gary Kliesch and Associate Architects

Rev.	No.	Drawing Issues	Revisions	Date
1		Window Changes		02/11/21

NJ: AI 13332	NJCID: 21D00025000
NY: 025618	CT: ARI0009367
FL: AR95762	DE: SS-0007765
WI: 11180-5	MD: 14129
PA: RA-015112B	SC: 8935
D.C.: ARC101838	MA: 10610
GA: RA 019863	MI: 1301064135
VA: 401016373	IL: 001.023586
NC: 11736	WV: 4569 NH-04487

Gary Kliesch
A.I.A., NCARB, NCID

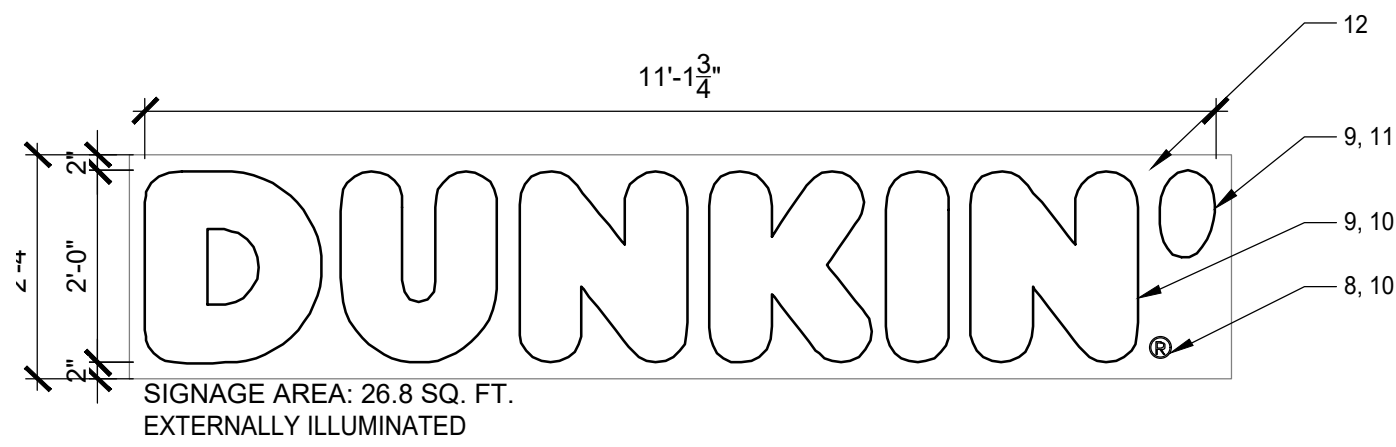
Proposed:

DUNKIN'

1276 Route 206
Montgomery, NJ
Lot 64, Block 28005
PC #349964

OMNI

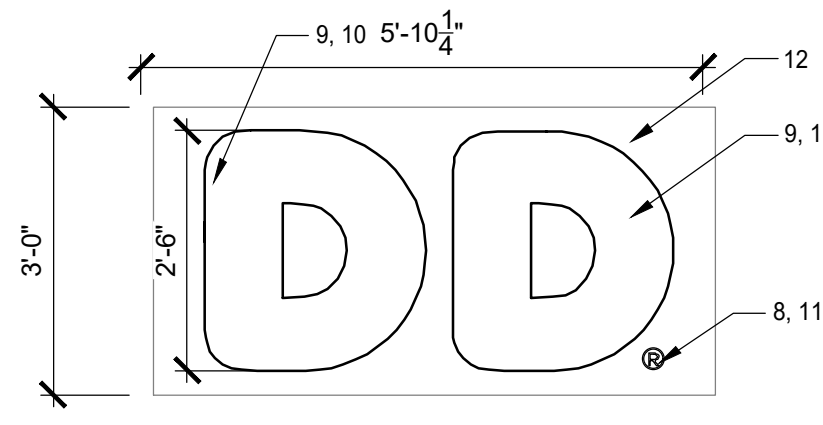
Drawing Title: PROPOSED ELEVATIONS	
Date: 05/07/21	Dwg No. A 2.0
Drawn By: J.M.	
Checked By: C.F.	
Job No: 11-051	2 of 3



ELEVATION
24" H " DUNKIN' " PRIMARY BLDG. SIGN

GENERAL NOTES:
1. .05" x 5" ALUMINUM RETURNS PAINTED TO MATCH PMS 7540C
2. 1" TRIM CAP TO MATCH JEWELITE 313 BRONZE
3. .063" ALUMINUM BACKING
4. GE TETRA MAX 7100K WHITE LED'S
(OR GE REPLACEMENT EQUIVALENT)
5. REMOTE POWER SUPPLY-AS REQUIRED
6. DRAIN HOLES, AS REQUIRED
7. MOUNTING HARDWARE, AS DETERMINED BY SITE CONDITIONS
8. .063" ALUMINUM DISK PAINTED WHITE (REGISTERED "R")
9. 3/16" THICK WHITE ACRYLIC FACE
10. 3M #3630-3123 DUNKIN' ORANGE TRANSLUCENT FILM 1ST SURFACE
11. 3M #3630-1379 DUNKIN' PINK TRANSLUCENT FILM 1ST SURFACE
12. WHITE FIBER CEMENT PANEL BACKGROUND

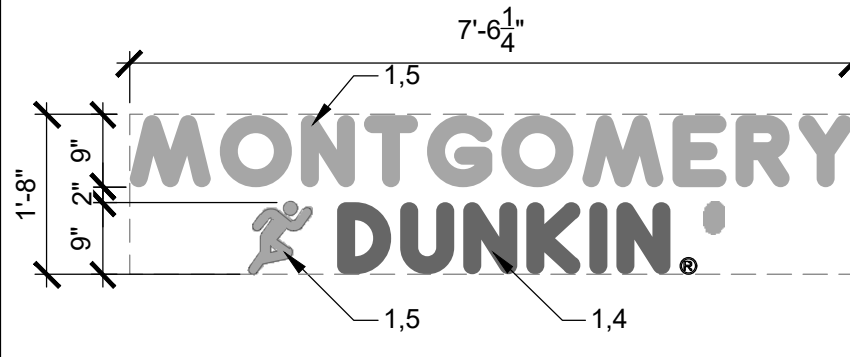
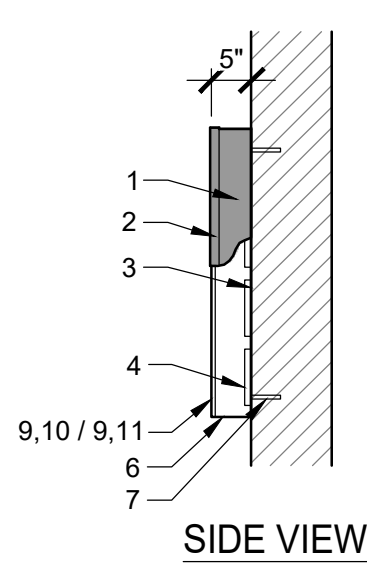
ADDITIONAL NOTES:
ARTWORK FONT : DUNKIN SANS DISPLAY
CHANNEL LETTER INTERIOR PAINTED REFLECTIVE WHITE
ELECTRICAL: (1) 20-AMP / 120-VOLT CIRCUIT
U.L.-LISTED
LED'S TO BE POPULATED FOR EVEN AND CONSISTENT LIGHTING WITHOUT HOT SPOTS OR SHADOWS



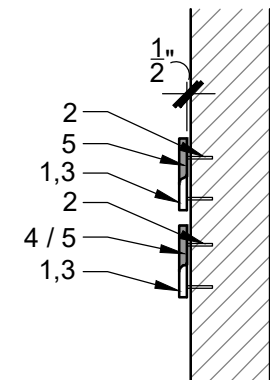
ELEVATION
30" H " DD " SECONDARY BLDG. SIGN

GENERAL NOTES:
1. .05" x 5" ALUMINUM RETURNS PAINTED TO MATCH PMS 7540C
2. 1" TRIM CAP TO MATCH JEWELITE 313 BRONZE
3. .063" ALUMINUM BACKING
4. GE TETRA MAX 7100K WHITE LED'S
(OR GE REPLACEMENT EQUIVALENT)
5. REMOTE POWER SUPPLY-AS REQUIRED
6. DRAIN HOLES, AS REQUIRED
7. MOUNTING HARDWARE, AS DETERMINED BY SITE CONDITIONS
8. .063" ALUMINUM DISK PAINTED WHITE (REGISTERED "R")
9. 3/16" THICK WHITE ACRYLIC FACE
10. 3M #3630-3123 DUNKIN' ORANGE TRANSLUCENT FILM 1ST SURFACE
11. 3M #3630-1379 DUNKIN' PINK TRANSLUCENT FILM 1ST SURFACE
12. WHITE FIBER CEMENT BACKGROUND

ADDITIONAL NOTES:
ARTWORK FONT : DUNKIN SANS DISPLAY
CHANNEL LETTER INTERIOR PAINTED REFLECTIVE WHITE
ELECTRICAL: (1) 20-AMP / 120-VOLT CIRCUIT
U.L.-LISTED
LED'S TO BE POPULATED FOR EVEN AND CONSISTENT LIGHTING WITHOUT HOT SPOTS OR SHADOWS



FRONT VIEW



CROSS SECTION

SIGNAGE AREA: 12.5 SQ. FT.
NON-ILLUMINATED PIN-MOUNTED LETTERS

- NOTES:
- 3/4" ROUTED PVC LETTERS.
 - MOUNTING STUDS AS REQUIRED PER SITE CONDITIONS. LETTERS SHOULD BE PIN MOUNTED WITH AT LEAST 1/2" SPACING BETWEEN BACK OF LETTER / BAR AND MOUNTING SURFACE.
 - ROUND PVC DISK PAINTED ORANGE PMS 165C (REGISTERED "R").
 - "DUNKIN" LETTERS FACES & RETURNS PAINTED ORANGE PMS 165C.
 - CITY NAME, MAN AND APOSTROPHE (') FACES & RETURNS PAINTED PINK PMS 219C.

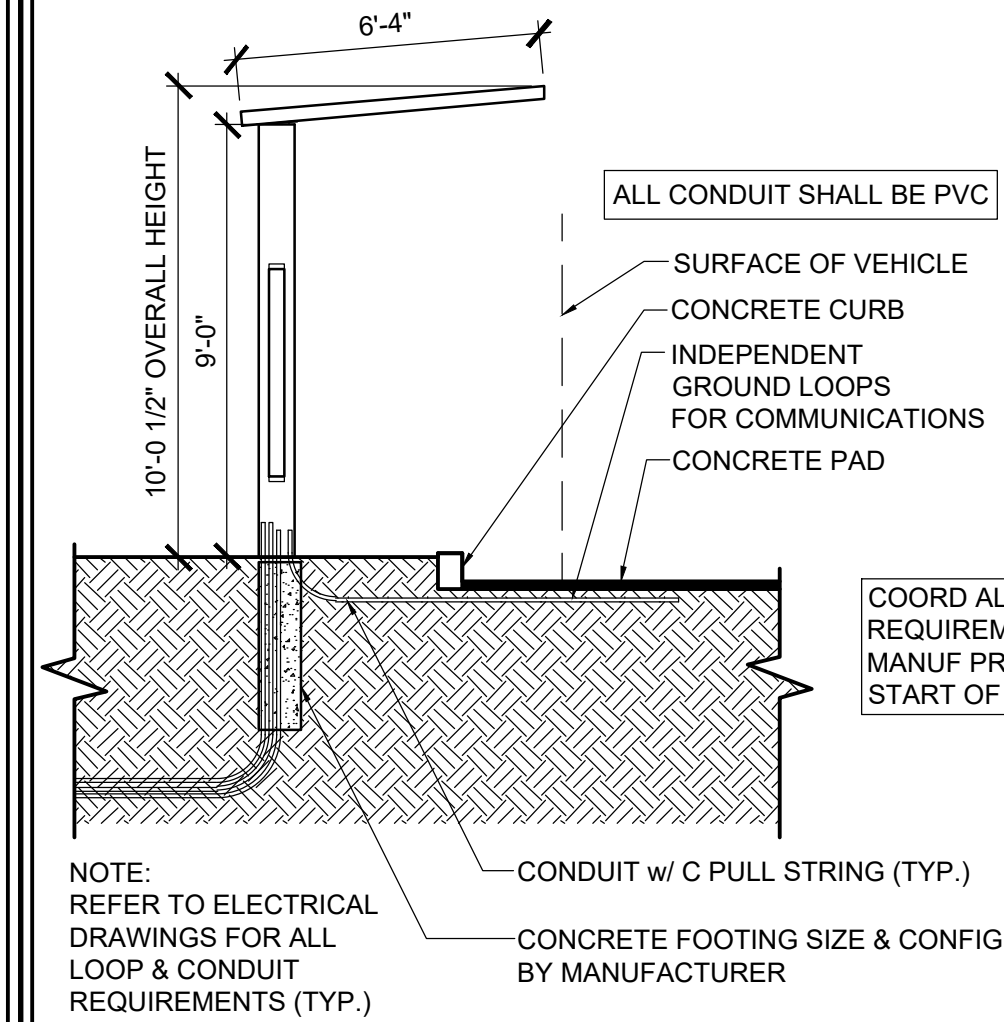
- ADDITIONAL NOTES:
- ARTWORK FONT: DUNKIN SANS DISPLAY
 - LETTERS SHOULD BE PIN MOUNTED WITH AT LEAST 1/2" SPACING BETWEEN BACK OF LETTER / BAR AND MOUNTED SURFACE.
 - ALLOWABLE TO STACK MESSAGING, HOWEVER NOT A PROTOTYPICAL STANDARD. DESIGN PROPOSAL REQUIRES FINAL APPROVAL FROM DBI DESIGNER BEFORE FABRICATION.

COLORS:

PMS	VINYL/PAINT
PMS 165 DD ORANGE	TRANS 3M #3630-3123
PMS 219 DD PINK	TRANS 3M #3630-1379
PMS 7540C DD GRAY	TRANS 3M #7725-41
PMS COOL GRAY 1C	TRANS 3M #7725-11

INSTALLATION:
• BY VIEWPOINT

NOTE:
SEE DUNKIN' BRANDS WEBSITE, <http://extranet.dunkinbrands.com>,
FOR COMPLETE INFORMATION AND DETAILS



NOTE:
REFER TO ELECTRICAL
DRAWINGS FOR ALL
LOOP & CONDUIT
REQUIREMENTS (TYP.)

COORD ALL ELECT
REQUIREMENTS w/
MANUF PRIOR TO
START OF WORK

1 BUILDING SIGN DETAIL

1/2" = 1'-0" NOTE:

2 BUILDING SIGN DETAIL

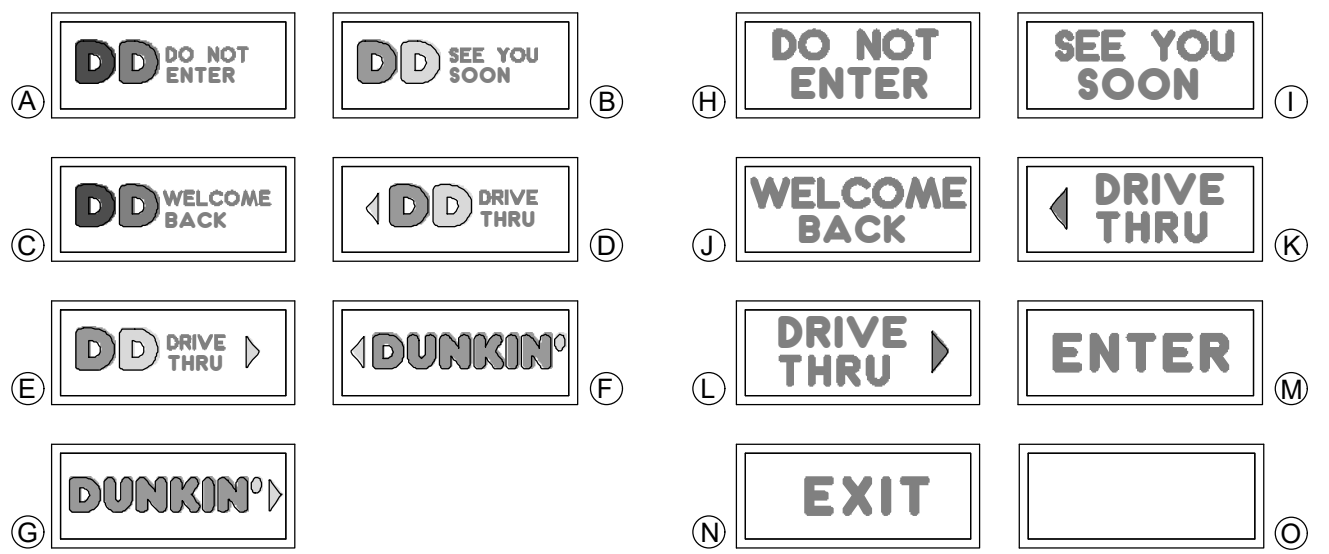
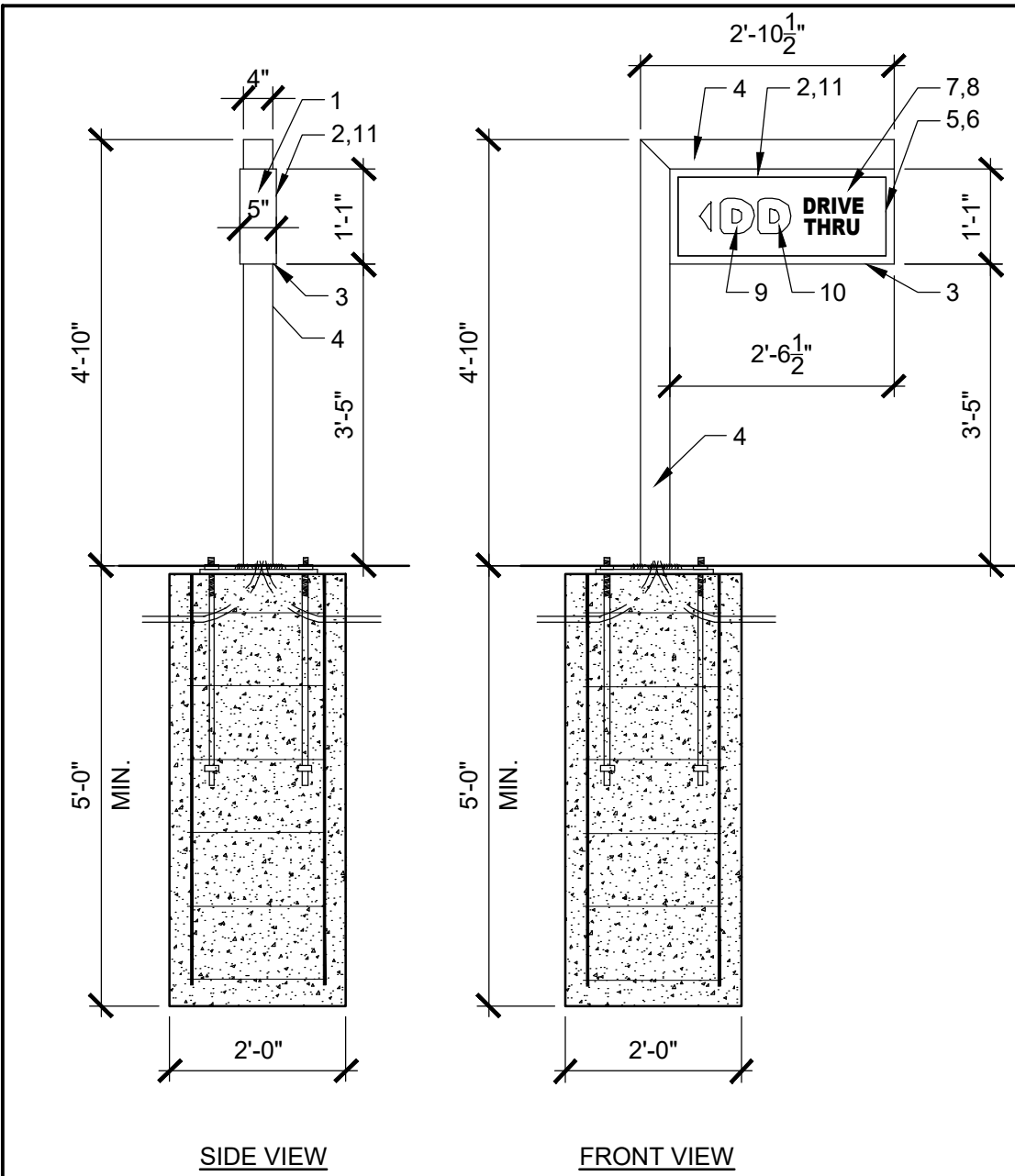
1/2" = 1'-0" NOTE:

3 BUILDING SIGN DETAIL

1/2" = 1'-0" NOTE:

3 DRIVE-THRU MENU SECTION

N.T.S. NOTE:



SIGN FACES

SIGNAGE BOX AREA: 2.75 SQ. FT.
LED ILLUMINATED DIRECTIONAL SIGN

- NOTES:
- 5" x 1" x .063" ALUMINUM SPACE FRAME.
 - 1" ALUMINUM RETAINER.
 - 1" x 1" x 1/8" ALUMINUM ANGLE.
 - 4" x 4" x .075" SQUARE TUBE SUPPORT PAINTED ORANGE PMS 165C
 - GE TETRA MAX 7100K WHITE LED'S.
 - (OR GE REPLACEMENT EQUIVALENT).
 - LED POWER SUPPLIES, AS REQUIRED.
 - 118" CLEAR SOLAR GRADE POLYCARBONATE FACE 2ND SURFACE.
 - BACKGROUND COLOR TO BE 403 WHITE BACK-SPRAY.
 - 3M #3630-3123 DUNKIN' ORANGE TRANSLUCENT FILM 2ND SURFACE.
 - 3M #3630-1379 DUNKIN' PINK TRANSLUCENT FILM 2ND SURFACE.
 - 3M #7125-41 DUNKIN' GRAY TRANSLUCENT FILM 2ND SURFACE.

- ADDITIONAL NOTES:
- ARTWORK FONT: DUNKIN SANS DISPLAY
 - EXTERIOR FINISH: PAINT PANTONE 7540C
 - INTERIOR FINISH: PAINTED REFLECTIVE WHITE
 - RETAINERS / FACE REMOVABLE FOR SERVICE ACCESS
 - ELECTRICAL: (1) 20-AMP / 120 VOLT CIRCUIT
 - U.L. LISTED

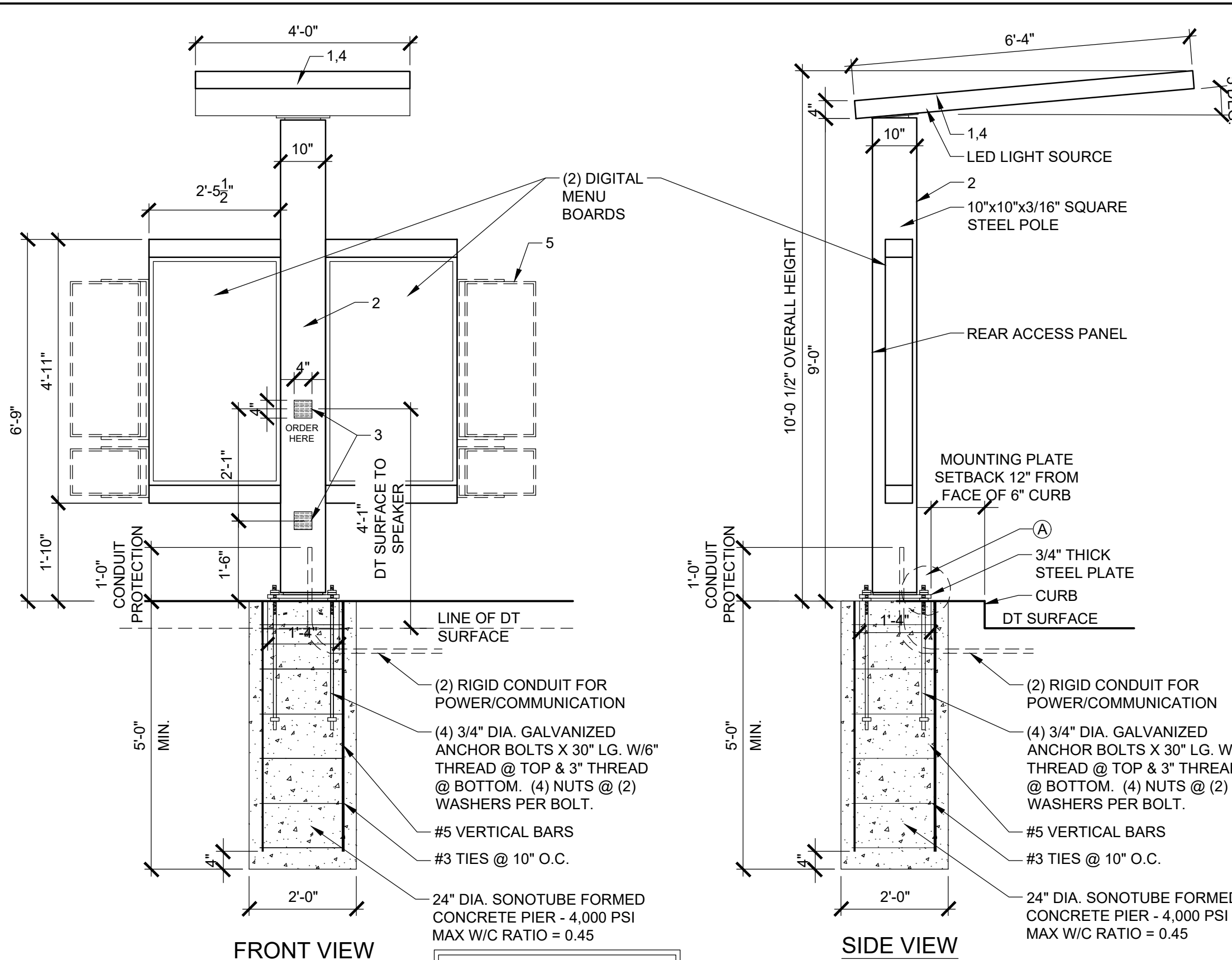
COLORS:

PMS	VINYL/PAINT
PMS 165 DD ORANGE	TRANS 3M #3630-3123
PMS 219 DD PINK	TRANS 3M #3630-1379
PMS 7540C DD GRAY	TRANS 3M #7725-41
PMS COOL GRAY 1C	TRANS 3M #7725-11

NOTE:
SEE DUNKIN' BRANDS WEBSITE, <http://extranet.dunkinbrands.com>,
FOR COMPLETE INFORMATION AND DETAILS

5 DIRECTIONAL SIGN DETAILS

1/2" = 1'-0" NOTE:



FRONT VIEW

SIDE VIEW

ILLUMINATED DRIVE-THRU CANOPY SIGN

- NOTES:
- PAINT TO MATCH ORANGE PMS 165C, GLOSS FINISH.
 - PAINT TO MATCH PMS COOL GRAY 1C, GLOSS FINISH.
 - BLACK VINYL, ARLON 2100-03, MIC BY OTHERS.
 - BREAKAWAY SWIVEL TOP.
 - OPTIONAL ADDITIONAL MENU BOARDS ATTACHMENTS.

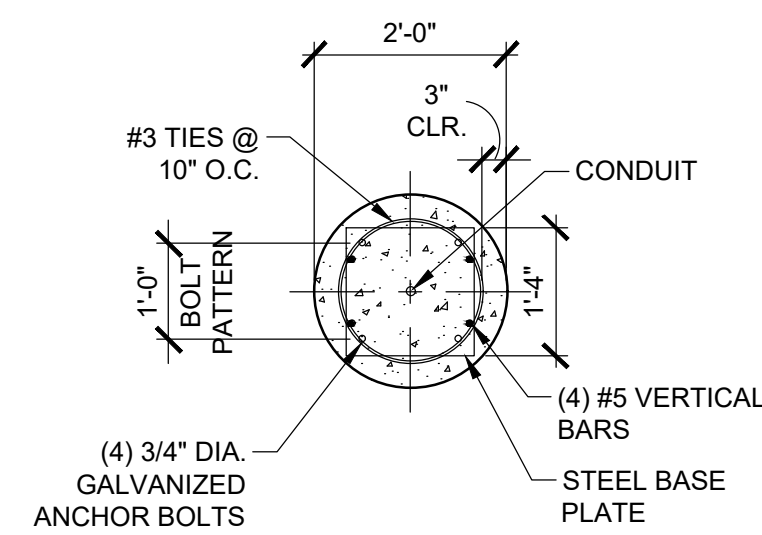
- ADDITIONAL NOTES:
- ARTWORK FONT: DUNKIN SANS DISPLAY
 - 120 VOLT CIRCUIT. TO BE CONFIRMED BY SITE
 - CLEARANCE TO BE CONFIRMED BY SITE
 - TOP HAS TWO DOWN LIGHTS

COLORS:

PMS	VINYL/PAINT
PMS 165 DD ORANGE	TRANS 3M #3630-3123
PMS 219 DD PINK	TRANS 3M #3630-1379
PMS 7540C DD GRAY	TRANS 3M #7725-41
PMS COOL GRAY 1C	TRANS 3M #7725-11

NOTE:
SEE DUNKIN' BRANDS WEBSITE, <http://extranet.dunkinbrands.com>,
FOR COMPLETE INFORMATION AND DETAILS

- NOTE:
- G.C. TO VERIFY BASE PLATE DIMENSIONS WITH MANUFACTURER OF DRIVE THRU ELEMENT AND NOTIFY ARCHITECT OF ANY DISCREPANCIES

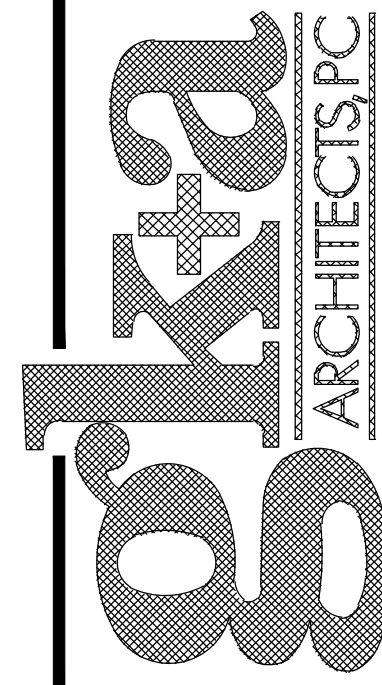


BASE PLATE DETAIL

6 DIGITAL "ALL IN ONE" ORDER CANOPY DETAIL

1/2" = 1'-0" NOTE:

36 Arnes Avenue
Rutherford, NJ 07070
Tel. 201.896.0333
Fax. 201.896.9469
email@gkanda.biz



Gary Kliesch and Associate Architects

Rev.	No.	Drawing Issues	Revisions	Date
1		Window Changes		02/11/21

NJ: AI 13332	NJCID: 21D00025000
NY: 025618	CT: ARI0009367
FL: AR95762	DE: SS-0007765
WI: 11180-5	MD: 14129
PA: RA-015112B	SC: 8935
D.C.: ARC101838	MA: 10610
GA: RA 019863	MI: 1301064135
VA: 401016373	IL: 001.023586
NC: 11736	WV: 4569
NH: 04487	

Gary Kliesch
AIA, NCARB, INCOB

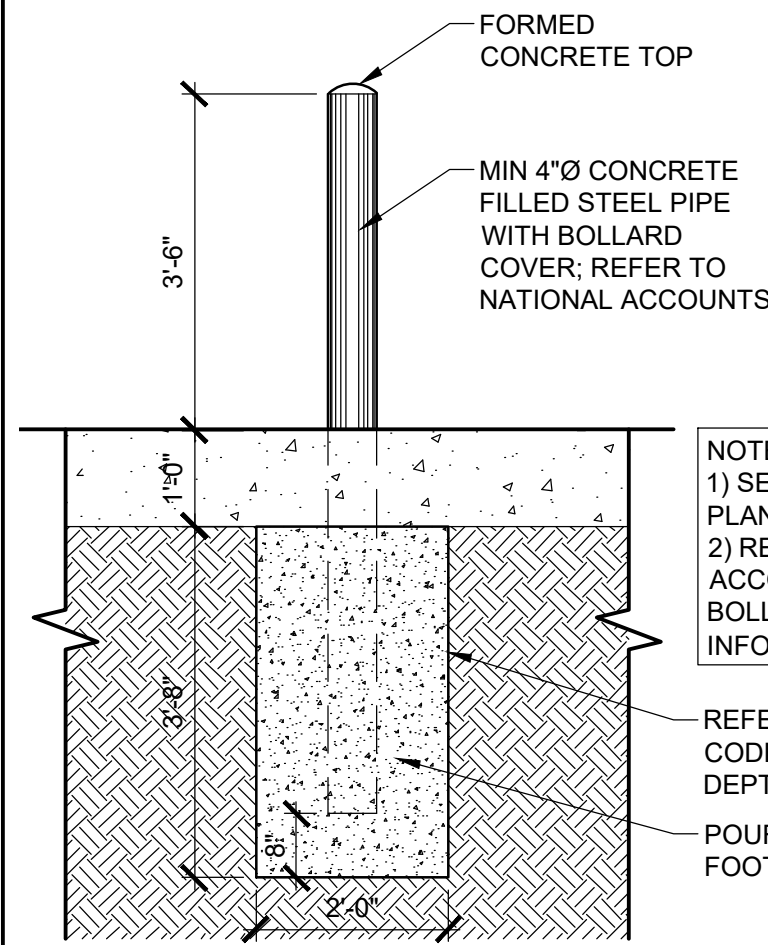
Proposed:

DUNKIN'

1276 Route 206
Montgomery, NJ
Lot 64, Block 28005
PC #349964

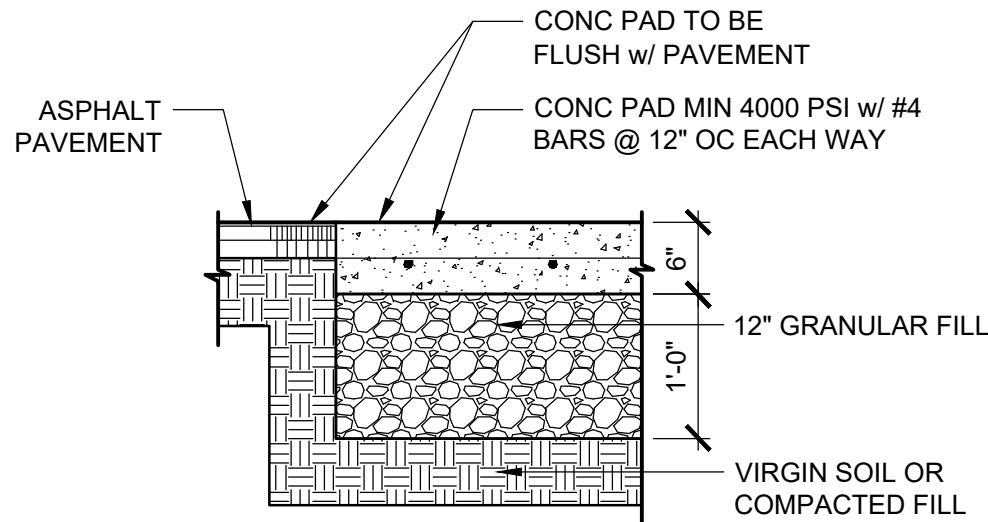
OMNI

Drawing Title: BUILDING SIGN DETAILS, SITE DETAILS	Dwg No. 05/07/21 Drawn By: J.M. Checked By: C.F. Job No: 11-051	3 of 4
--	--	--------



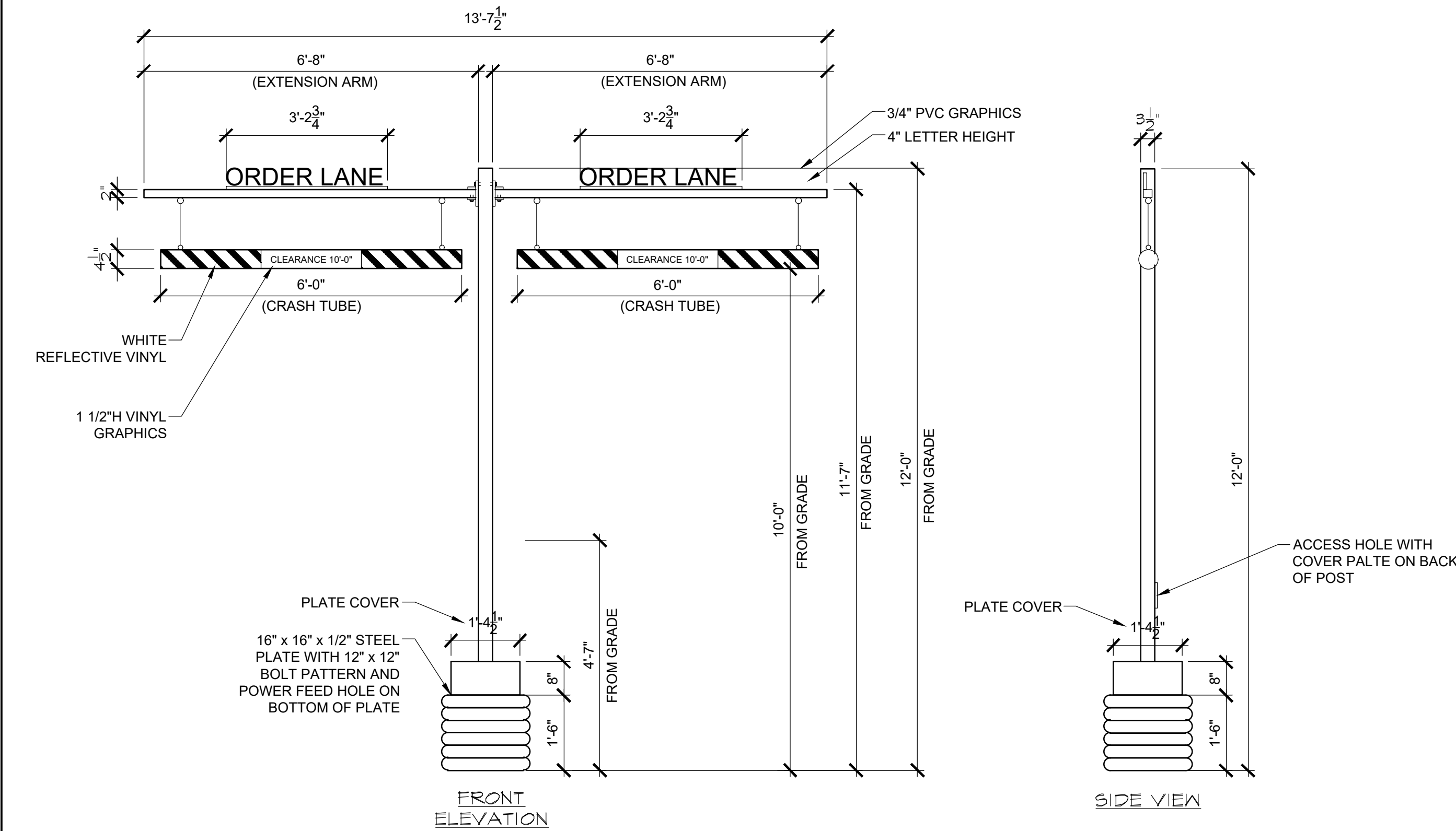
1 BOLLARD DETAIL

1/2"=1'-0" NOTE:



2 SECTION @ CONC. PAD

3/4"=1'-0" NOTE:



ELEVATION: (QTY: 1) #8814

VEHICLE CLEARANCE BAR

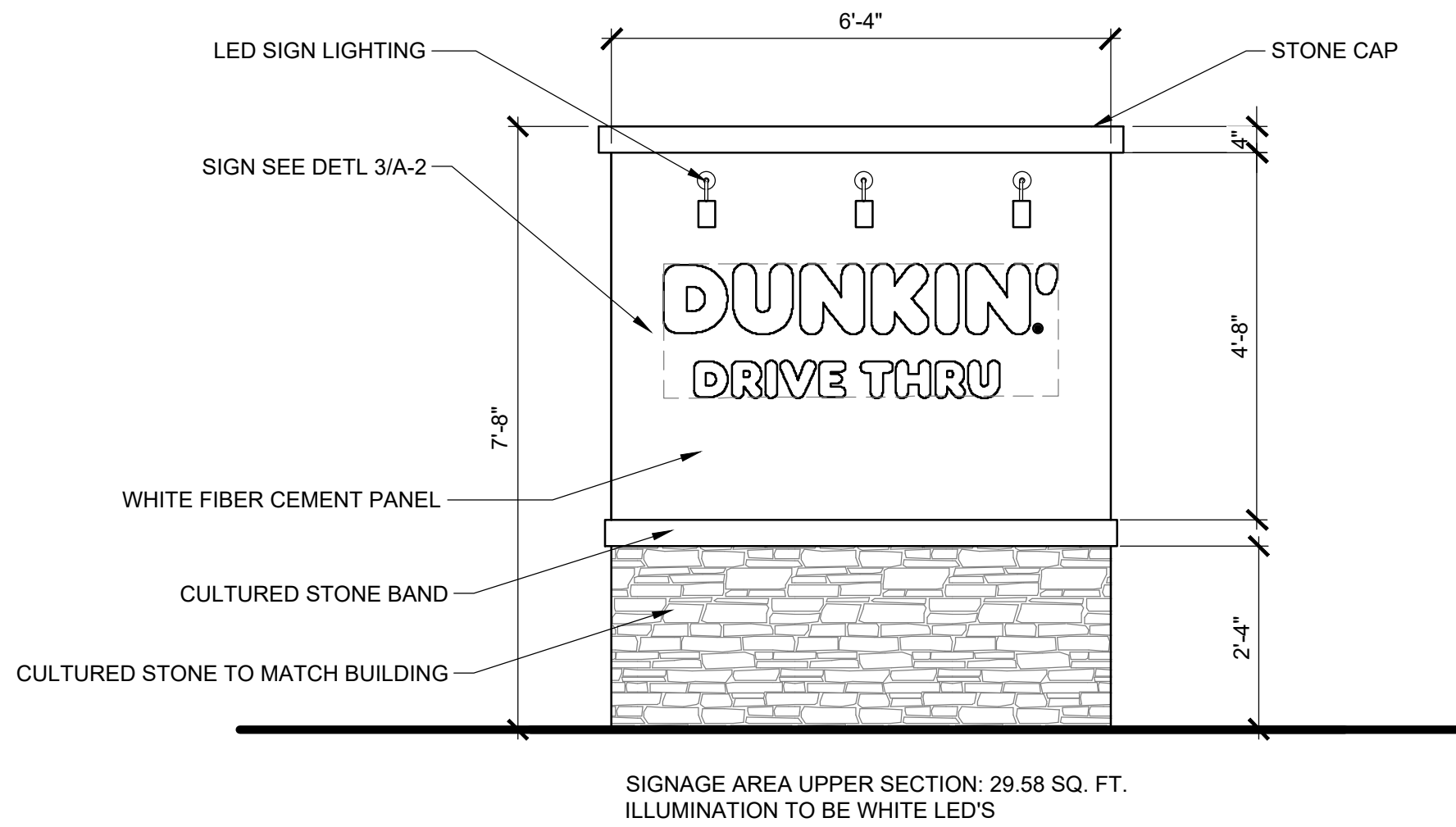
DESCRIPTION:
(QTY: 1) VEHICLE CLEARANCE BAR.
3-1/2" SQUARE STEEL MAIN POST WITH 2" SQUARE STEEL CROSS ARM AND 1/2" PLATE STEEL MOUNTING PLATE WITH HOLE AT BOTTOM FOR POWER FEED;
1/8" & .063" ALUMINUM PLATE COVER (PAINTED);
PAINTED 3/4" PVC LETTERS, MOUNTED TO CROSS ARM WITH 1" ANGLE AFFIXED TO BACKS;
PAINTED 4-1/2" PVC CRASH-TUBES WITH VINYL "CLEARANCE" COPY AND REFLECTIVE VINYL STRIPING;
CRASH TUBES AFFIXED TO CROSS ARM WITH REQUIRED HARDWARE AND AIRCRAFT CABLE.
NOTE: CROSS-ARM EYE BOLTS TO BE REMOVABLE FOR MAINTENANCE PURPOSES;
NOTE: ACCESS HOLE WITH COVER PLATE REQUIRED ON BACK OF POST, G.C. TO PROVIDE CONDUIT FOR POWER PER SITE PLANS.

TYPEFACE:
COPY IS GOTHAM BOLD

COLORS:
POST & PLATE:
PAINTED TO MATCH ALUMET CHARCOAL GRAY ALUMINUM;
PLATE COVER:
PAINTED TO MATCH ALUMET CHARCOAL GRAY ALUMINUM;
CROSS ARM:
PAINTED TO MATCH ALUMET CHARCOAL GRAY ALUMINUM;
CRASH TUBES:
PAINTED DD ORANGE PMS #165C
PAINTED DD MAGENTA PMS #219C;
PVC GRAPHICS:
PAINTED DD ORANGE PMS #165C
PAINTED DD MAGENTA PMS #219C;
VINYL GRAPHICS:
WHITE REFLECTIVE 3M #280-10
PAINTED DD ORANGE PMS #165C
PAINTED DD MAGENTA PMS #219C;

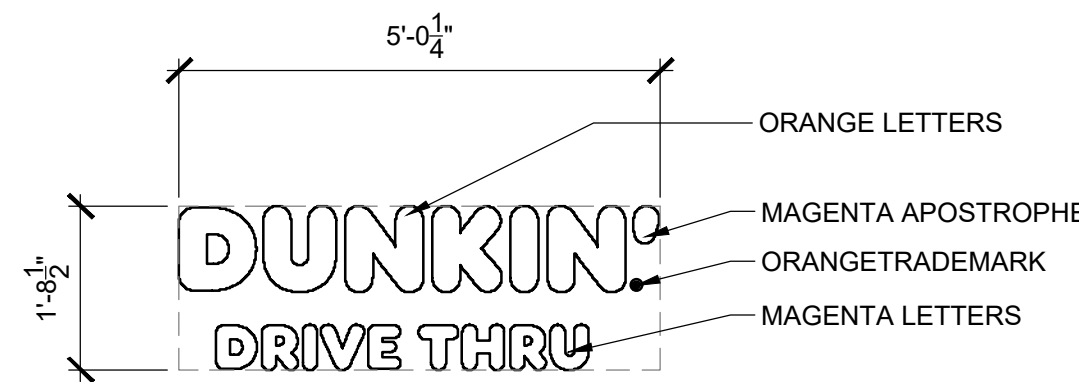
4 DUAL VEHICLE CLEARANCE BAR DETAIL

1/2"=1'-0" NOTE:



5 PYLON SIGN DETAIL

1/2"=1'-0" NOTE:



SIGNAGE AREA: 8.5 SQ. FT.
ILLUMINATION TO BE EXTERNAL LED

COLOR & MATERIAL NOTES:

DESCRIPTION:
• WHITE OPTIX #2406 FACES, FLOODED WIDTH TRANSLUCENT VINYL, WITH
• FLUSH MOUNTED TO FACADE WITH REQUIRED HARDWARE
TYPEFACE/LOGO:
• ART ON FILE
COLORS:
• FACES - WHITE OPTIX #2406
• VINYL GRAPHIC
DD ORANGE TRANS 3M #3630-3123
DD MAGENTA TRANS 3M #3630-1379
DD CHARCOAL GRAY 3M #220-41

36 Ames Avenue
Rutherford, NJ 07070
Tel. 201.896.0333
Fax. 201.896.9469
email@gkanda.biz

gkanda
ARCHITECTS PC

Gary Kliesch and Associate Architects

Rev. No.	Drawing Issues	Revisions	Date
1	Window Changes		02/11/21

NJ: AI 13332	NJCID: 21D00025000	Gary Kliesch A.I.A., NCARB, NCOD
NY: 025618	CT: ARI 0009367	
FL: AR95762	DE: SS-0007765	
WI: 11180-5	MD: 14129	
PA: RA-015112B	SC: 8935	
D.C.: ARC101838	MA: 10610	
GA: RA 019863	MI: 1301064135	
VA: 401016373	IL: 001 023586	
NC: 11736	WV: 4569	
NH: 04487		

Proposed:
DUNKIN'
1276 Route 206
Montgomery, NJ
Lot 64, Block 28005
PC #349964

Drawing Title: SITE AND SIGNAGE DETAILS	Date: 05/07/21	Dwg No. A 4.0
Drawn By: J.M.	Checked By: C.F.	Job No: 11-051
		4 of 4